

#AAD2019

Highlights
AEDV

IN 77TH AAD CONGRESS

1-5 MARCH 2019

★ WASHINGTON ★

Scientific Initiative of:



Sponsored by:



#AAD2019

Highlights
AEDV

IN 77TH AAD CONGRESS

1-5 MARCH 2019

★ WASHINGTON ★

Psoriasis

Dr. Manel Velasco

Scientific Initiative of:



Sponsored by:



PSORIASIS PEDIÁTRICA: KELLY CORDORO

Highlights
AEDV

IN 77TH AAD CONGRESS

1-5 MARCH 2019

★ WASHINGTON ★

- PASI is not used commonly in practice
- BSA and QoL combined
- 5% BSA may severe for certain patients, 50% BSA may be not
- Warning about bullying, shame, social withdrawal
- PsA: 10-40% of kids
- 80% prior to skin disease
- Peak onset: 2-3 and 9-12 y

Psoriasis Severity Grid

		IMPACT	
		Low	High
BSA	Low	Mild	Mod-Severe
	High	Mod-Severe	Severe

Low BSA
Low Impact
Mild

Low BSA
High Impact
Mod-Severe

High BSA
Low Impact
Mod-Severe

High BSA
High Impact
Severe

PSORIASIS PEDIÁTRICA: KELLY CORDORO

Highlights
AEDV

IN 77TH AAD CONGRESS

1-5 MARCH 2019

★ WASHINGTON ★

Annual Screening Recs for Healthy Psoriasis Patients Aged 2-21

- Blood pressure
- BMI (body mass index)
- Arthritis screen by H&P
 - Joint pain / swelling / inflammation
 - Joint stiffness after rest; limp
- Mood disorders screen
 - Anxiety, depression, substance abuse

Screening follows *AAP age-related guidelines. No panels/questionnaires.

Additional screening only if H&P suggest (ex. lipids, DM, fatty liver if obese) .

*AAP = American Academy of Pediatrics

LATE BREAKINGS: CLINICAL TRIALS

VIP-S STUDY

#AAD2019

Highlights
AEDV
IN 77TH AAD CONGRESS
1-5 MARCH 2019
★ WASHINGTON ★

- 86 patients with severe psoriasis
- 44 secukinumab
- 42 placebo
- 18-FDG PET/CT at base line and at week 12
- Vascular inflammation
- Secukinumab had a neutral impact on aortic vascular inflammation
- Future studies should evaluate direct effects on coronary disease in high risk patients

10038

Cardiometabolic effects of Secukinumab

Andreas Pinter¹, Sascha Gerdes², Philipp Barteczek³, Maximilian Reinhardt³

- Pooled data of 3 Clinical trials
- Effects of secukinumab on various cardiometabolic parameters at 52 w
- Secukinumab reduces fasting plasma glucose, hyperuricemia and hs-CPR
- No impact on body weight

HOT TOPICS : DR LEBWHOL



- Risk of malignancies and biologics
- Anti TNF: increase incidence of mm, lymphoma, NMSC and lung cancer
- Anti IL-17: no increase of incidence of any cancer type
- Anti-IL23: no increase of incidence of any cancer type

HOT TOPICS : DR LEBWHOL

Highlights
AEDV

IN 77TH AAD CONGRESS

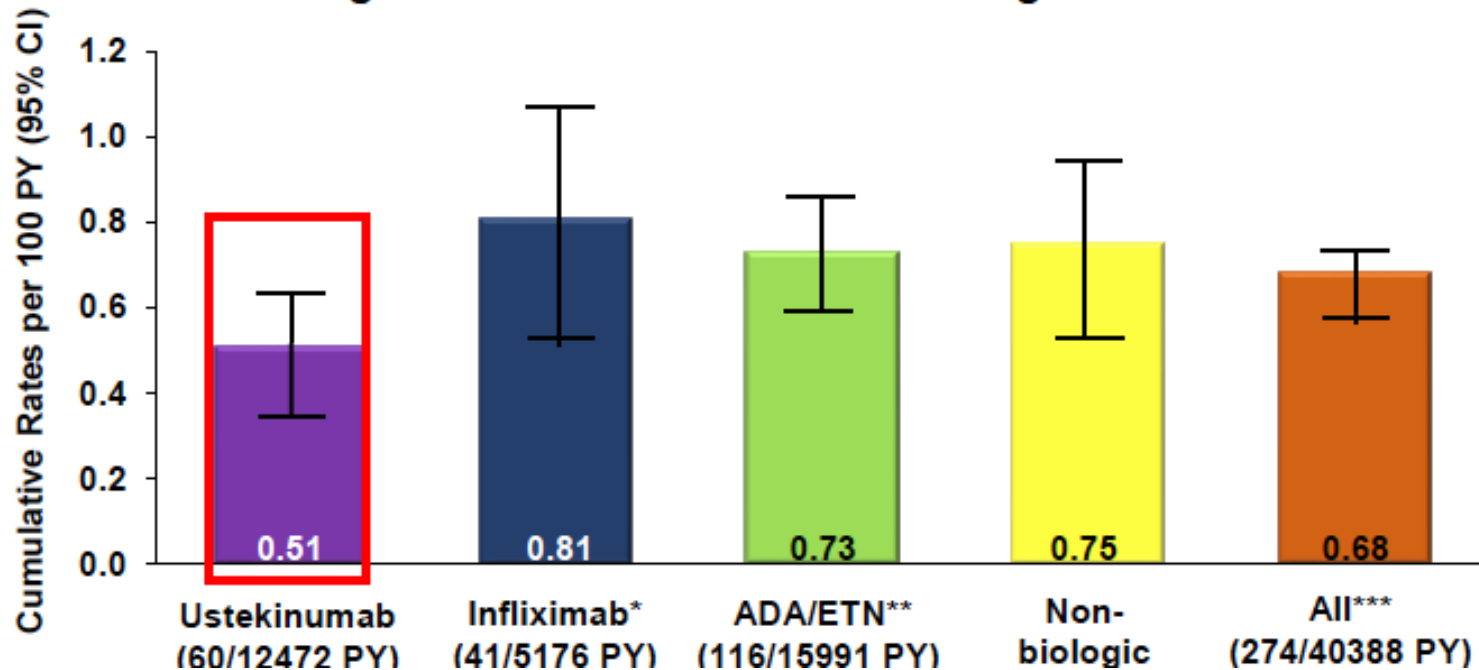
1-5 MARCH 2019

★ WASHINGTON ★

PSOLAK

Results: Age and Gender Adjusted Cumulative Rates of Malignancies (excluding NMSC) per 100 Patient-Years (PY) Based on Any Exposure to Therapy (Figure 1)

Figure 1. Cumulative Rates of Malignancies



HOT TOPICS : DR LEBWHOL

Highlights
AEDV

IN 77TH AAD CONGRESS

1-5 MARCH 2019

★ WASHINGTON ★

IL-17 Mediated Inflammation Promotes Tumor Growth and Progression in the Skin

D. He, et al

PLoS ONE 2012; 7: 1-9

IL-23 → ↑IL-17 → ↑tumor growth

Could blocking IL-17 be protective against cancer?

HOT TOPICS : DR LEBWHOL

Highlights
AEDV

IN 77TH AAD CONGRESS

1-5 MARCH 2019

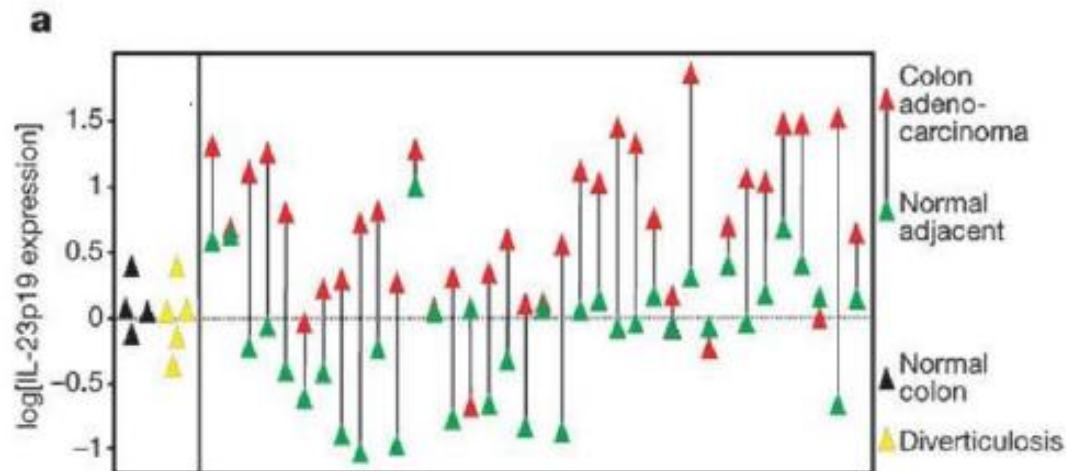
★ WASHINGTON ★

nature
International journal of science



Figure 1 : Overexpression of IL-23 but not of IL-12 in human cancer.

From: IL-23 promotes tumour incidence and growth



DRUG	PsA	OBESITY	CARDIAC	CA	+ANA	LUPUS	MS	CROHN UC	HEPATITIS C	HEP B	CHF
ETANERCEPT	+	+	+	-							
ADALIMUMAB	+	+	+	-							
INFLIXIMAB	+	+	+	-							
CERTOLIZUMAB	+	+	+	-							
USTEKINUMAB	+	+	+	+/-							
SECUKINUMAB	+	+	?	+/-							
IXEKIZUMAB	+	+	?	+/-							
BRODALUMAB	+	+	?	+/-							
GUSELKUMAB	?	+	?	+/-							
TILDRAKIZUMAB	?	+	?	+/-							
RISANKIZUMAB	?	+	?	+/-							
MIRIKIZUMAB	?	+	?	+/-							
APREMILAST	+	+	?	+/-							
METHOTREXATE	+	X	+	-							
CYCLOSPORINE	+/-	+	?/-	X							
ACITRETIN	+/-	+	?/-	+							